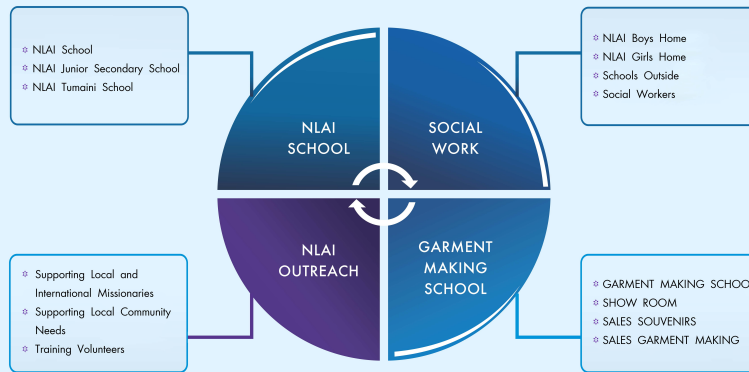




# NEW LIFE AFRICA INTERNATIONAL



## Organization

### BOARD MEMBERS

Chairman - Bishop D. Ford  
Vice Chairman - Jess Peek  
Secretary - Kennedy K. Kariuki  
Vice Secretary - Nancy Gitau  
Treasurer - Janet Peek  
Vice treasurer - Lydia Venter  
Susanne Madsen  
Leif Madsen  
Willy Hoeigaard  
Ann Kilu  
Billy Hansen  
Jona Hansen

### NLAI BOARD

**DIRECTORS**  
Susanne & Leif Madsen

**NLAI MANAGER**  
Kennedy K. Kariuki

### STEERING COMMITTEE

Leif Madsen  
Susanne Madsen  
David Ford  
Kennedy Kariuki  
Jane Makena  
Lynah Mato  
Ann Kilu  
Simon Gathuku

### DEPARTMENTAL COMMITTEE

Leif Madsen (Director)  
Susanne Madsen (Director)  
Bishop D. Ford (Chairman)  
Kennedy Kariuki (Manager)  
Jane Makena (NLAI School Leader)  
Lynah Mato (Leader of Garment Making School)  
Ann Kilu (Supervisor Children's Home and schools outside)  
Beatrice Kinyua (Social work)  
Beth Mulhee (Secretary)  
Mary Nganga (Leader Girls Home)  
Isaac Mkgwa (Leader Boys Home)  
Mary Gachuho (Public Relations)  
Dorcas Njari (Counselor)  
Dorcas Nduku (Head NLAI Tumaini School)  
Janice Kauri (Healthcare)  
Emmanuel Odera (College/university students)

**PUBLIC RELATIONS**  
Mary Gachuho

**FINANCE**  
Simon Gathuku

**SECRETARY**  
Beth Mulhee

### SOCIAL WORK



**Kennedy K. Kariuki**

**PROCUREMENT**  
Josephat Kinyua

**MAINTANANCE**

**SECURITY**

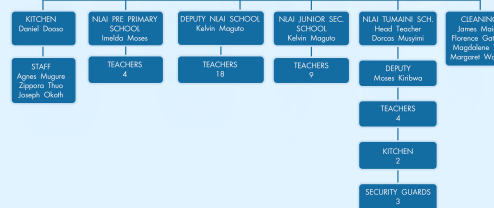
### NLAI SCHOOL



**HEAD TEACHER**  
Jane Makena

**HEALTHCARE**  
Janice Kauri

**COUNSELING**  
Dorcas Njari



### GARMENT MAKING SCHOOL



**HEAD TEACHER**  
Lynah Mato

**ASSISTANT**  
Lucy Wacuka

